



Performance levels

Performance levels:

Subdivision of class 1 hoses (uncoated hoses) in diameter C and B into three performance levels with regard to abrasion resistance:

diameter	performance level	number of rotations
C/42 C/52	L1	200
	L2	400
	L3	600
B/75	L1	80
	L2	120
	L3	140

Hose cuff:

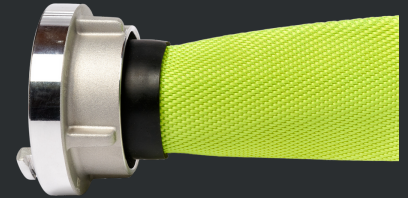
L1 = A hose cuff **can** be fitted over the tail of the couplings.

L2/L3 = A hose cuff **must** be fitted over the tail of the couplings.

Binding wire:

For hoses ≤ 75 mm: 1,4 mm Stainless-steel wire

For hoses > 75 mm: 1,8 mm Stainless-steel wire



PARSCH hoses divided into performance levels:



PARSCH SYNTHETIC 4Z SL

inner diameter	performance level
C/42	L3
C/52	L3
B/75	L3



PARSCH SYNTHETIC 3Z SL

inner diameter	performance level
C/42	L2
C/52	L2
B/75	L2



PARSCH SYNTHETIC (2Z) SL

inner diameter	performance level
C/42	L1
C/52	L1
B/75	L2



PARSCH SYNTHETIC 4Z Reflex

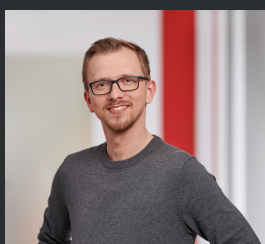
inner diameter	performance level
C/42	L3
C/52	L3
B/75	L3



PARSCH SYNTHETIC 3Z Reflex

inner diameter	performance level
C/42	L2
C/52	L2
B/75	L2

Your contact persons:



Holgar Herda

herda@parsch.de

+49 (0) 5451 / 929-224



Lisa Plake

plake@parsch.de

+49 (0) 5451 / 929-226



PARSCH Schläuche - Armaturen GmbH & Co. KG

Gildestraße 16, 49477 Ibbenbüren, Germany

www.parsch.de