



Accessories



**Quality made in Germany ...
... Quality made by PARSCH**

PARSCH Schläuche - Armaturen GmbH & Co. KG
Gildestraße 16, 49477 Ibbenbüren, Germany
www.parsch.de



If you are looking for the perfect hose, we will be happy to help you.
As our company slogan states:

**Quality made in Germany ...
... Quality made by PARSCH**

our products have been used for a wide variety of applications since 1765. Please contact us for further information and advice, because not every hose is the same.

PARSCH GmbH & Co. KG
Schläuche - Armaturen
Gildestraße 16
49477 Ibbenbüren
Germany

www.parsch.de



Contact persons: International Sales



Holgar Herda

E-Mail: herda@parsch.de
Telephone: +49 (0) 5451 / 929-224



Lisa Plake

E-Mail: plake@parsch.de
Telephone: +49 (0) 5451 / 929-226

**Quality made in Germany ...
... Quality made by PARSCH**



Accessories

RUBBER HOSE RAMP

HOSE CUFF

FIRST AID REPAIR SLEEVE

HOSE CARRIER

PRONTO P10
hose vulcaniser

TOP FIT
reparation kit for PRONTO P10

BINDING DEVICE

TABLE OF CONTENTS



Characteristics:

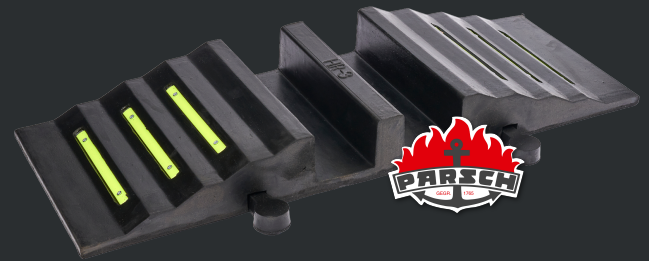
- suitable for heavy vehicle loads
- approx. 30 cm (12") wide units which lock together quickly and simple to required width of ramps
- easy to transport
- suitable for single and twin hose lines
- flexible apron base for optimum ground grip
- reliable maintenance-free operation

Applications:

fire brigades, industry, forestry, agriculture, construction sites

RUBBER HOSE RAMP

interlocking design in high strength reinforced rubber



inner diameter	weight kg	length mm	width mm	height mm
for two hoses up to 75 mm	12	855	302	84
for two hoses up to 90 mm	16	830	320	102
for two hoses up to 125 mm	21	1.010	290	135





Construction:

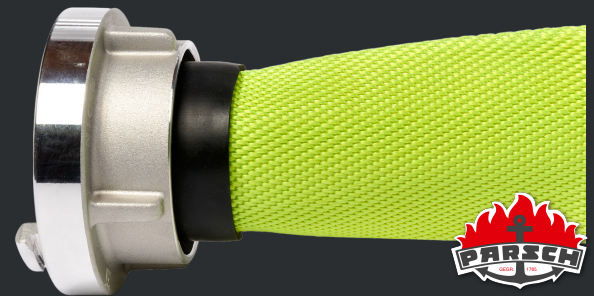
manufactured in high quality synthetic rubber, the wall thickness of approx. 3 mm enables hard stress

Eigenschaften:

- extends beyond the coupling tail reducing impact damages when the hose is dropped or dragged
- fits tightly behind the coupling collar preventing ingress and build up to mud between the coupling and hose
- 3 mm wall thickness provides resistance to impact damages
- prevents potential hand injuries during coupling connection
- can easily be fitted to existing hose assemblies

HOSE CUFF

impact and abrasion protection for hose assemblies





Characteristics:

- for first aid repair of leakages and chafes during service
- fits tightly by the use of inside pressure
- can be slipped to the endangered spot to protect the hose from damages
- damages area easily identified after service
- trouble-free running through hose washing machines

damaged hose



FIRST AID REPAIR SLEEVE

system for first aid repair of delivery hoses



first aid repair





Characteristics:

- trouble free operation, clamping free release
- infinitely variable for each and every hose size and dimension
- simple, sturdy mechanism
- welded steel design
- corrosion proof by galvanizing coating with zinc
- wear and tear resistant belt made from synthetic material
- width: 40 mm, length: 1.000 mm

HOSE CARRIER

practical hose carrier for all kinds of hoses





Technical specifications

Voltage (AC)	230 V - 50/60 HZ
Power	600 W
Temperature range	135 - 160 °C
Timer	up to 60 min.
Packing dimension	420 x 210 x 560 mm (width x depth x height)
Weight	7,5 kg
Heating unit size	175 x 100 mm
CE-conformity	EN 292-2-1992/EN 60204-1-1993

Repair material

TOP FIT: especially suitable for use with vulcaniser PRONTO P10



red and white patch



PRONTO P10

vulcaniser for the repair of layflat delivery hoses



1	Lever handle
2	Clamping lever
3	Connection rod pin
4	Connection rod
5	Pin circlip
6	Tie rod
7	Heating unit
8	Rubber pad
9	Warning light
10	Timer
11	Switch box
12	Connection cable
13	Support unit
14	Spring
15	Front cover



Consisting of

- 2x patch repair material, 10 x 15 cm, red-white
- 1x scissor
- 1x brush
- 1x plastic bottle to be filled with acetone (not supplied)
- 1x Teflon folia
- 1x repair instruction

Storage / Shelf life

deep freeze (-10 °C to -15 °C)	long term storage (minimum 24 months)
refrigerator (+15 °C)	normal storage (minimum 12 months)
room temperature (+20 °C)	immediate workshop use (4 to 6 weeks)

Information

With the TOP FIT repair kit you can repair uncoated, Polyurethane coated as well as rubber covered layflat delivery hoses. This repair system does not require an internal patch repair as the external repair system provides all the strength necessary to put a damage hose back into service.

TOP FIT

repair kit for the external repair
of layflat Delivery Hoses



Vulcaniser PRONTO P10

Safe repair option up to 5 mm hole diameter or 10 mm tear length.

Repair instruction

Please use our data sheet or the video (QR-code below) for the repair instruction.





Binding device

Characteristics:

Consisting of an aluminium frame with a wire guide roller, a wire spool as well as a strap brake.

With 500 gr. 1,4 mm binding wire made out of Stainless steel.

Weight: approx. 1,10 kg.

Mechanical chucking device

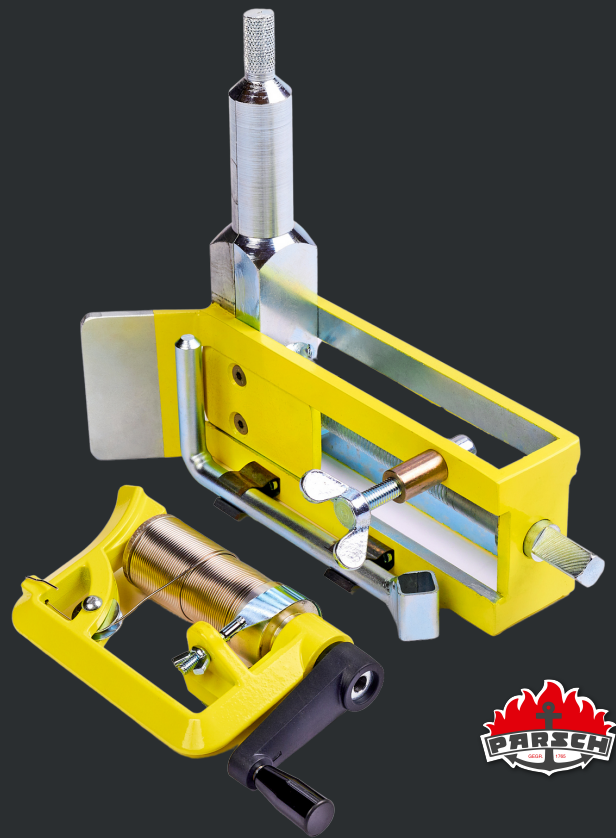
Characteristics:

To hold the couplings (any size) in place while binding.

Made of galvanized steel and painted.

Weight: approx. 4,20 kg.

BINDING DEVICE & MECHANICAL CHUCKING DEVICE



Quality made in Germany ...
... Quality made by PARSCH



PARSCH Schläuche - Armaturen GmbH & Co. KG
Gildestraße 16, 49477 Ibbenbüren, Germany
www.parsch.de