



Couplings



**Quality made in Germany ...
... Quality made by PARSCH**

PARSCH Schläuche - Armaturen GmbH & Co. KG
Gildestraße 16, 49477 Ibbenbüren, Germany
www.parsch.de



If you are looking for the perfect hose, we will be happy to help you.
As our company slogan states:

Quality made in Germany ...
... Quality made by PARSCH

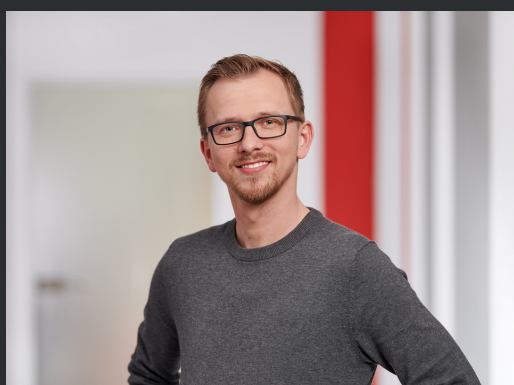
our products have been used for a wide variety of applications since 1765. Please contact us for further information and advice, because not every hose is the same.

PARSCH GmbH & Co. KG
Schläuche - Armaturen
Gildestraße 16
49477 Ibbenbüren
Germany

www.parsch.de



Contact persons: International Sales



Holgar Herda

E-Mail: herda@parsch.de
Telephone: +49 (0) 5451 / 929-224



Lisa Plake

E-Mail: plake@parsch.de
Telephone: +49 (0) 5451 / 929-226

Quality made in Germany ...
... Quality made by PARSCH



Couplings

TABLE OF CONTENTS

DELIVERY COUPLINGS

System: Storz

SUCTION COUPLINGS

System: Storz

COUPLINGS FOR SEGMENT BINDING

System: Storz

ICONOS COUPLINGS

System: Storz

INNOTRADE COUPLINGS

PERROT COUPLINGS

GEKA COUPLINGS

CLAW COUPLINGS

KAMLOCK COUPLINGS

BRITISH COUPLINGS

System: Instantaneous

FRENCH COUPLINGS

System: DSP, AR, GFR, Guillemin

SPANISH COUPLINGS

System: Barcelona

ITALIAN COUPLINGS

System: UNI



Couplings

SWEDISH COUPLINGS

System: SMS

NORWEGIAN COUPLINGS

System: NOR

AMERICAN COUPLINGS

System: NH

RUSSIAN COUPLINGS

System: GOST

JAPANESE COUPLINGS

System: Nakajima

TABLE OF CONTENTS



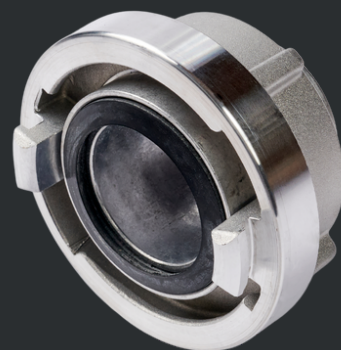
DELIVERY COUPLINGS system: Storz

Characteristics:

Quick connection couplings for delivery operation. Tail piece, rotatably mounted inside the clamp fitting

Material:

Aluminium, Brass, Stainless steel etc.



size mm	lug distance mm	hose inner diameter mm	length tail piece mm	weight kg	standard	material	article number
38/38	51	38	90	0,22		Aluminium	10099
C/42	66	42	55	0,35	DIN 14332	Aluminium	3583
C/45	66	45	70	0,36		Aluminium	3584
C/52	66	52	55	0,33	DIN 14302	Aluminium	3585
C/52	66	52	90	0,37		Aluminium	3603
65/38	81	38	90	0,45		Aluminium	3605
65/52	81	52	60	0,45	NEN 3374	Aluminium	3613
65/52	81	52	90	0,49		Aluminium	3607
65/65	81	65	60	0,42	NEN 3374	Aluminium	3614
65/65	81	65	100	0,48		Aluminium	3609
65/75	81	75	65	0,41	NEN 3374	Aluminium	3615
65/75	81	75	100	0,52		Aluminium	3611
B/65	89	65	85	0,57		Aluminium	5477
B/70	89	70	75	0,58		Aluminium	3618
B/75*	89	75	75	0,60	DIN 14303	Aluminium	3588
100/100	115	102	85	0,99		Aluminium	5616

* three ribs

size mm	lug distance mm	hose inner diameter mm	length tail piece mm	weight kg	standard	material	article number
C/42	66	42	55	0,94		Brass	4367
C/52*	66	52	75	0,97	DIN 86202	Brass	3591
65/63,5	81	65	100	1,45		Brass	3658
B/75	89	75	85	1,65	DIN 86203	Brass	3592

* three ribs



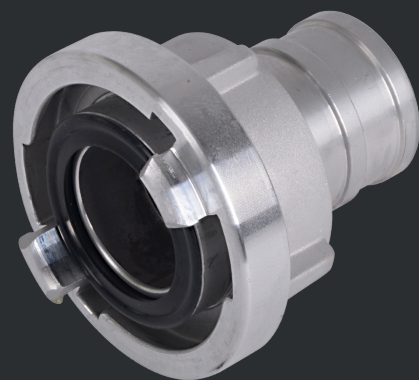
SUCTION COUPLINGS system: Storz

Characteristics:

Quick connection couplings for suction operation. Tail piece, rotatably mounted inside the clamp fitting

Material:

Aluminium, Brass, Stainless steel etc.



size mm	lug distance mm	hose inner diameter mm	length tail piece mm	weight kg	standard	material	article number
D/19	31	19	55	0,10		Aluminium	3581
D/25	31	25	53	0,09	DIN 14301	Aluminium	3580
32/32	44	32	70	0,14		Aluminium	7039
38/25	51	25	90	0,20		Aluminium	7338
38/32	51	32	90	0,21		Aluminium	9269
38/38	51	38	90	0,21		Aluminium	3727
45/45	59	45	75	0,28		Aluminium	3729
C/25	66	25	90	0,37		Aluminium	3596
C/32	66	32	90	0,37		Aluminium	3598
C/38	66	38	90	0,37		Aluminium	3599
C/42	66	42	90	0,50		Aluminium	3728
C/45	66	45	90	0,37		Aluminium	3730
C/52	66	52	90	0,77	DIN 14321	Aluminium	3720
C/65	66	65	95	0,51		Aluminium	9277
65/45	81	45				Aluminium	7493
65/65	81	65	95	0,51		Aluminium	8479
65/70	81	70	95	0,52		Aluminium	8479
B/52	89	52	125	0,66		Aluminium	7389
B/65	89	65	125	0,68		Aluminium	3733
B/70	89	70	125	0,73		Aluminium	3734
B/75	89	75	125	1,40	DIN 14322	Aluminium	3723
90/90	102	90	160	1,09		Aluminium	8479
100/100	115	102	150	1,15		Aluminium	5617
A/90	133	90	170	1,68		Aluminium	7584
A/100	133	102	170	1,60		Aluminium	3619
A/110	133	110	170	1,60	DIN 14323	Aluminium	3725
A/125	133	125	180	2,02		Aluminium	7328
125/125	148	125	196	2,30		Aluminium	3620
F/150	160	150	180	2,60		Aluminium	3737





SUCTION COUPLINGS system: Storz

size mm	lug distance mm	hose inner diameter mm	length tail piece mm	weight kg	standard	material	article number
D/25	31	25	53	0,28		Brass	10180
38/38	51	38	90	0,72		Brass	8566
C/42	66	42	90	1,09		Brass	3621
C/45	66	45	90	1,14		Brass	3743
C/52	66	52	90	2,20		Brass	3741
B/65	89	65	95	1,72		Brass	6697
B/75	89	75	125	3,73		Brass	3744
A/100	133	102	170	4,35		Brass	8397
A/110	133	110	170	5,00		Brass	4723

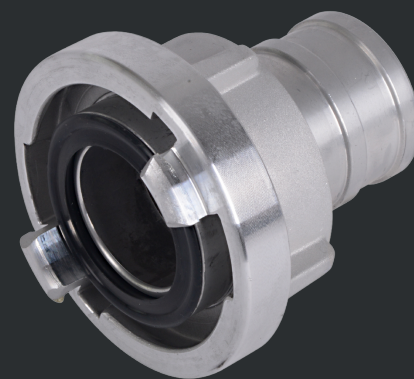
size mm	lug distance mm	hose inner diameter mm	length tail piece mm	weight kg	standard	material	article number
D/25	31	25	53	0,26		Stainless steel	6113
C/38	66	38	90	0,98		Stainless steel	7502
C/52	66	52	90	0,95		Stainless steel	3701
B/75	89	75	105	1,79		Stainless steel	3703
A/100	133	102	170	3,94		Stainless steel	3704
A/110	133	110	170	4,25		Stainless steel	5532



Characteristics:

Couplings for segment binding

**COUPLINGS FOR
SEGMENT BINDING
system: Storz**



size mm	lug distance mm	hose inner diameter mm	length tail piece mm	weight kg	material	article number
C/52	66	52	81	0,37	Aluminium	5993
65/75	81	75	65	0,46	Aluminium	7420
B/75	89	75	85	0,58	Aluminium	5994
90/90	105	90	80	0,83	Aluminium	9516
100/100	115	102	83	1,01	Aluminium	9518
A/100	133	102	88	1,40	Aluminium	4708
A/110	133	110	88	1,37	Aluminium	4713
125/125	148	125	90	1,66	Aluminium	3750
F/150	160	150	101	2,32	Aluminium	
205/205	220	203	120	4,28	Aluminium	

segments for
above couplings



**Quality made in Germany ...
... Quality made by PARSCH**





Characteristics:

3 segments with bolts and nuts

**SEGMENTS
for above couplings**



size mm	size inch	weight kg	material	article number
C/52	2"	0,41	Aluminium	
65	2 1/2"	0,50	Aluminium	
B/75	3"	0,55	Aluminium	7421
90	3 1/2"	0,63	Aluminium	9517
100	4"	0,76	Aluminium	4710
A/110	4 1/2"	0,73	Aluminium	4714
125	5"	1,37	Aluminium	4713
F/150	6"	1,52	Aluminium	3753
205	8"	2,45	Aluminium	5698

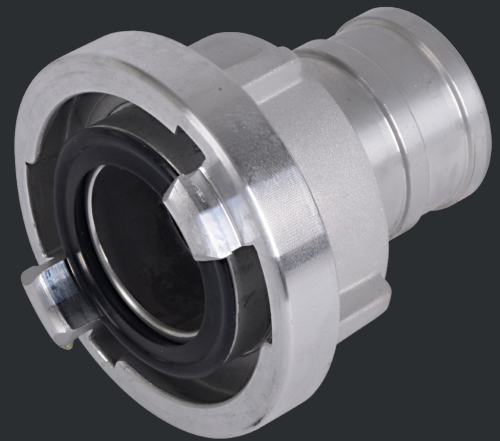




Characteristics:

hose couplings for ICONOS clamp rings

**DELIVERY COUPLINGS
system: Storz (ICONOS)**



size mm	lug distance mm	hose inner diameter mm	length tail piece mm	weight kg	standard	material	article number
D/25*	31	25	55	0,10	DIN 14301	Aluminium	3580
C/42	66	42	100	0,67	DIN 14332	Aluminium	3583
C/52	66	52	97	0,65	DIN 14302	Aluminium	3585
B/75	89	75	98	1,01	DIN 14303	Aluminium	3588
A/110	133	110	170	3,14	DIN 14323	Aluminium	3725

* suction coupling

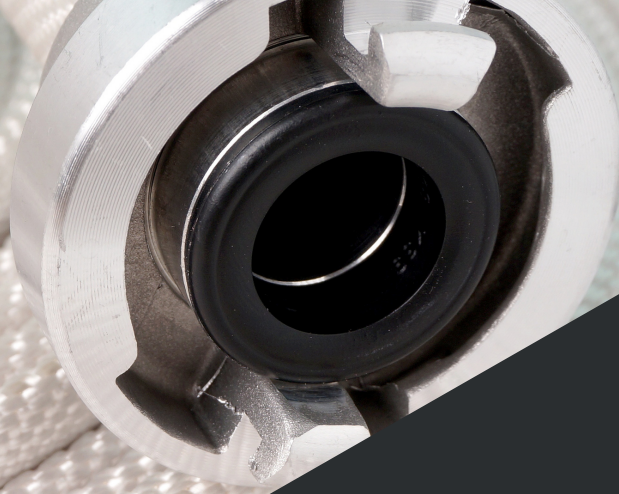
Characteristics:

two-part

**CLAMP RINGS ICONOS
for delivery couplings**



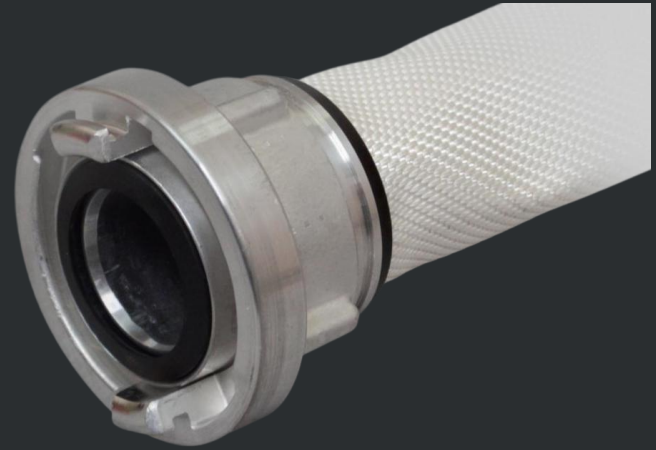
size mm	length mm	weight kg	standard	material	article number
D/25			DIN 14301	Aluminium	7716
C/42	77	0,34	DIN 14332	Aluminium	7001
C/52	74	0,32	DIN 14302	Aluminium	7030
B/75	70	0,46	DIN 14303	Aluminium	7244
A/110	118	1,48	DIN 14323	Aluminium	7085



Characteristics:
quick and easy hose assembly

INNOTRADE COUPLINGS

size 1 for uncoated hoses



size mm	lug distance mm	hose inner diameter mm	material	article number
C/42	66	42	Aluminium	7016
C/52	66	52	Aluminium	3593
B/75	89	75	Aluminium	3594
A/110	133	110	Aluminium	3595

INNOTRADE COUPLINGS

size 2 for coated hoses

size mm	lug distance mm	hose inner diameter mm	material	article number
C/42	66	42	Aluminium	
C/52	66	52	Aluminium	
B/75	89	75	Aluminium	9691
A/110	133	110	Aluminium	





Characteristics:

quick connection couplings with lever catch

Working pressure:

10 bar

**PERROT COUPLINGS
female**



size mm	hose inner diameter mm	information	material	article number
50/2"	52	female	Stainless steel	9591
70/75	75	female	Stainless steel	6417
89/77	75	female	Stainless steel	10214
89/89	89	female	Stainless steel	7343
89/102	102	female	Stainless steel	6384
108/90	90	female	Stainless steel	5517
108/102	102	female	Stainless steel	6430
108/110	110	female	Stainless steel	6453
159/152	152	female	Stainless steel	4734
216/200	205	female	Stainless steel	9559

Perrot couplings
male



**Quality made in Germany ...
... Quality made by PARSCH**





Characterisitcs:
quick connection couplings

Working pressure:
10 bar

PERROT COUPLINGS male



size mm	hose inner diameter mm	information	material	article number
50/2"	52	male	Stainless steel	9592
70/75	75	male	Stainless steel	6416
89/77	75	male	Stainless steel	10215
89/89	89	male	Stainless steel	7342
89/102	102	male	Stainless steel	6383
108/90	90	male	Stainless steel	5518
108/102	102	male	Stainless steel	6429
108/110	110	male	Stainless steel	6450
159/152	152	male	Stainless steel	4735
216/200	205	male	Stainless steel	9560



Characteristics:

hose tail suitable for clamps and crimping rings

Material:

Brass, Stainless steel etc.

Working pressure:

10 bar

**GEKA-
CLAW COUPLINGS**



size mm	hose inner diameter mm	material seal	material	article number
1/2"	13	NBR	Brass	7051
3/4"	19	NBR	Brass	3747
1"	25	NBR	Brass	3748
1 1/4"	32	NBR	Brass	7086
1 1/2"	38	NBR	Brass	3749





CLAW COUPLING according to DIN 3489

Characteristics:

according to DIN 3489 with NBR seal

Material:

Brass, Stainless steel etc.

Working pressure:

16 bar

Temperature:

-40°C bis + 95°C



size mm	hose inner diameter mm	material seal	material	article number
1/2"	13	NBR	Brass	7923
3/4"	19	NBR	Brass	7923
1"	25	NBR	Brass	3746





KAMLOK COUPLING FEMALE TYPE C

Characteristics:

according to MIL A-A-59326A with hose tail for clamps with NBR seal

Material:

Aluminium, Stainless steel, Gunmetal etc.

Working pressure:

16 bar



size mm	hose inner diameter mm	material	article number
1"	25	Stainless steel	7884
1 1/2"	38	Stainless steel	9662
2"	52	Stainless steel	6098
3"	75	Stainless steel	7766
4"	102	Stainless steel	

size mm	hose inner diameter mm	material	article number
1"	25	Aluminium	8791
1 1/2"	38	Aluminium	8776
2"	52	Aluminium	9595
3"	75	Aluminium	
4"	102	Aluminium	9593

size mm	hose inner diameter mm	material	article number
1"	25	Gunmetal	
1 1/2"	38	Gunmetal	4371
2"	52	Gunmetal	4372
3"	75	Gunmetal	
4"	102	Gunmetal	

Kamlok coupling
male type E



Quality made in Germany ...

... Quality made by PARSCH



KAMLOK COUPLING male TYPE E

Characteristics:

according to MIL A-A-59326A with hose tail for clamps

Material:

Aluminium, Stainless steel, Gunmetal etc.

Working pressure:

16 bar



size mm	hose inner diameter mm	material	article number
1"	25	Stainless steel	
1 1/2"	38	Stainless steel	
2"	52	Stainless steel	6099
3"	75	Stainless steel	7767
4"	102	Stainless steel	

size mm	hose inner diameter mm	material	article number
1"	25	Aluminium	9223
1 1/2"	38	Aluminium	9610
2"	52	Aluminium	9596
3"	75	Aluminium	
4"	102	Aluminium	9594

size mm	hose inner diameter mm	material	article number
1"	25	Gunmetal	
1 1/2"	38	Gunmetal	4373
2"	52	Gunmetal	4374
3"	75	Gunmetal	
4"	102	Gunmetal	



Characteristics:

Instantaneous delivery hose couplings with male and female part

Material:

Aluminium, Gunmetal, etc.

BRITISH COUPLINGS INSTANTANEOUS

delivery couplings according to BS 336



type	size inch	hose inner diameter inch	hose inner diameter mm	weight/pair kg	material	article number
Instantaneous	1 1/2	1 1/2	38	0,471	Aluminium	5990
Instantaneous	2 1/2	1 1/2	38	0,950	Aluminium	3661
Instantaneous	2 1/2	1 3/4	45	1,000	Aluminium	3664
Instantaneous	2 1/2	2	52	0,960	Aluminium	3666
Instantaneous	2 1/2	2 1/2	64	0,980	Aluminium	3671
Instantaneous	2 1/2	2 3/4	70	1,050	Aluminium	3668

type	size inch	hose inner diameter inch	hose inner diameter mm	weight/pair kg	material	article number
Instantaneous	1 1/2	1 1/2	38	1,380	Gunmetal	3660
Instantaneous	2 1/2	1 1/2	38	2,750	Gunmetal	3663
Instantaneous	2 1/2	1 3/4	45	2,800	Gunmetal	3665
Instantaneous	2 1/2	2	52	2,800	Gunmetal	3670
Instantaneous	2 1/2	2 1/2	64	2,800	Gunmetal	3672
Instantaneous	2 1/2	2 3/4	70	2,800	Gunmetal	3822





Characteristics:

symmetrical quick connection couplings for delivery operations with locking ring

Hose tail:

grooved

Working pressure:

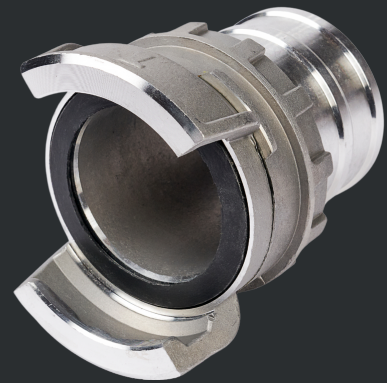
25 bar

Material:

Aluminium, Brass, etc.

**FRENCH COUPLINGS
DSP & AR**

couplings according to NF S 61-701



type	size	lug distance mm	hose inner diameter mm	hose tail mm	weight/pair kg	material	article number
DSP	40	55	45	31	0,180	Aluminium	5595
DSP	65	84	70	44	0,410	Aluminium	5598
AR*	100	123	110	85	1,030	Aluminium	5593

* suitable for suction operations

Characteristics:

asymmetrical quick connection couplings for delivery operations

Hose tail:

multi serrated

Working pressure:

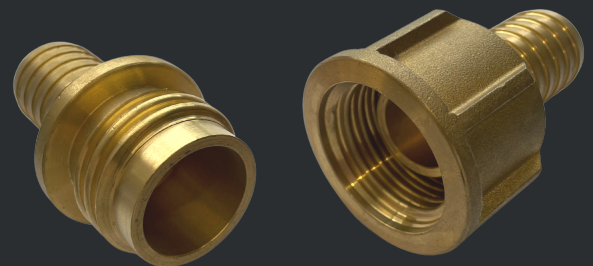
25 bar

Material:

Brass, Aluminium etc.

**FRENCH COUPLINGS
GFR**

couplings according to NF E 29579



type	size	hose inner diameter mm	material	male/ female	article number
GFR	20/25	25	Brass	male	3680
GFR	20/25	25	Brass	female	3681





Characteristics:

symmetrical quick connection couplings for delivery and suction operations with locking ring

Working pressure:

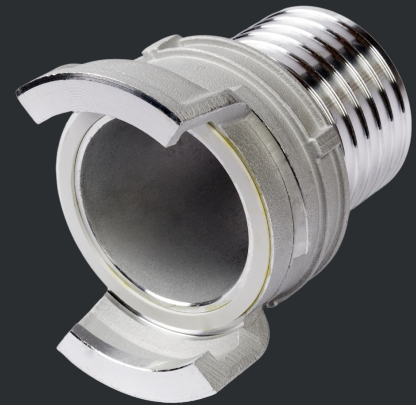
16 bar

Material:

Aluminium, Brass, etc.

**FRENCH COUPLINGS
Guillemin**

couplings according to NF E 29572



type	size	hose inner diameter mm	hose tail	material	article number
Guillemin	20/25	25	serr. tail	Aluminium	3754
Guillemin	40/45	25	serr. tail	Aluminium	3755
Guillemin	65/70	70	serr. tail	Aluminium	3756
Guillemin	100/110	110	serr. tail	Aluminium	3758

type	size	hose inner diameter mm	hose tail	material	article number
Guillemin	20/25	25	serr. tail	Brass	3760
Guillemin	40/45	25	grooved	Brass	7196
Guillemin	65/70	70	grooved	Brass	7197
Guillemin	100/110	110	serr. tail	Brass	3759





Characteristics:
for suction operations

Material:
Aluminium etc.

SPANISH COUPLINGS system: BARCELONA



type	size mm	hose inner diameter inch	hose inner diameter mm	weight kg	material seal	material	article number
Barcelona	25	42	25	0,15	NBR	Aluminium	3708
Barcelona	45/38	62	38	0,20	NBR	Aluminium	7909
Barcelona	45	62	45	0,25	NBR	Aluminium	3709
Barcelona	70	88	70	0,35	NBR	Aluminium	3710



Characterisitcs:

asymmetric hose couplings with internal and external thread (female/male)

Material:

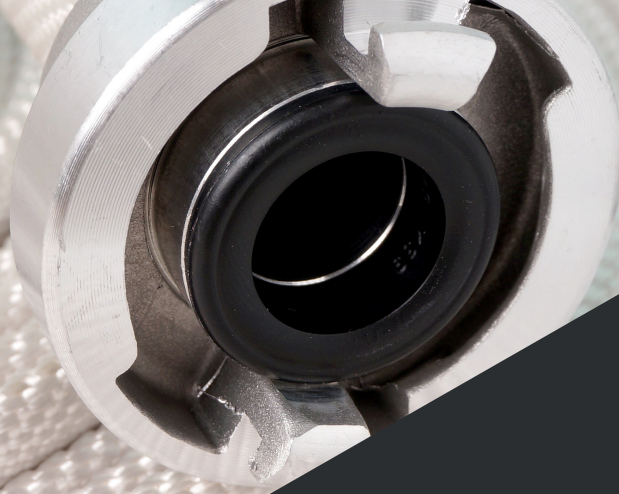
Brass

ITALIAN COUPLINGS system: UNI



type	size mm	type of coupling	hose inner diameter mm	female thread inch	male thread inch	material seal	material	article number
UNI	25	A	25	1	1	NBR	Brass	3705
UNI	45	A	45	1 3/4	1 3/4	NBR	Brass	3706
UNI	70	A	70	2 3/4	2 3/4	NBR	Brass	3707





Characterisitcs:
symmetrical couplings

Material:
Aluminium, Brass

SWEDISH COUPLINGS system: SMS



type	size mm	inner diameter inch	inner diameter mm	material seal	material
SMS	32/25	1	25	NBR	Brass
SMS	32/38	1 1/2	38	NBR	Brass
SMS	32/42	1 3/4	42	NBR	Brass
SMS	63/51	2	52	NBR	Aluminium
SMS	63/63	2 1/2	65	NBR	Aluminium
SMS	63/76	3	75	NBR	Aluminium



NORWEGIAN COUPLINGS system: NOR

Characteristics:

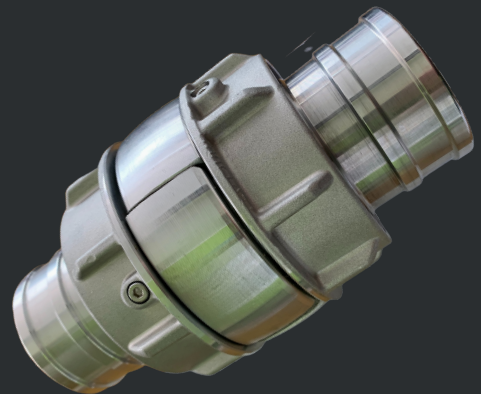
hose couplings for delivery operations

Material:

Aluminium, Brass

Working pressure:

16 bar



type	size mm	hose inner diameter inch	hose inner diameter mm	material seal	LAS	material	article number
NOR	1 1/2" - 1 1/2"	1 1/2	38	NBR	3	Aluminium	10111
NOR	2" - 1 1/2"	1 1/2	38	NBR	2	Aluminium	3653
NOR	2" - 2"	2	52	NBR	2	Brass	3654
NOR	2 1/2" - 2"	2	52	NBR	1	Brass	3655
NOR	1/2" - 2 1/2"	2 1/2	65	NBR	1	Aluminium	10028
NOR	2 1/2" - 2 1/2"	2 1/2	65	NBR	1	Brass	3656



AMERICAN COUPLINGS system: NH

Characteristics:

NH hose couplings for external binding

Material:

Aluminium, Brass, Gunmetal etc.



type	size inch	hose inner diameter inch	hose inner diameter mm	material seal	material	article number
NH	1 1/2" - 1 1/2"	1 1/2	38	NBR	Aluminium	3695
NH	2 1/2" - 1 1/2"	1 1/2	38	NBR	Aluminium	7614
NH	2 1/2" - 2 1/2"	2 1/2	65	NBR	Aluminium	3697
NH	4" - 4"	4	102	NBR	Aluminium	7669
NH	5" - 5"	5	125	NBR	Aluminium	

type	size inch	hose inner diameter inch	hose inner diameter mm	material seal	material	article number
NH	1 1/2" - 1 1/2"	1 1/2	38	NBR	Brass	3696
NH	2 1/2" - 1 1/2"	1 1/2	38	NBR	Brass	
NH	2 1/2" - 2 1/2"	2 1/2	65	NBR	Brass	3699
NH	4" - 4"	4	102	NBR	Brass	
NH	5" - 5"	5	125	NBR	Brass	

type	size inch	hose inner diameter inch	hose inner diameter mm	material seal	material	article number
NH	1 1/2" - 1 1/2"	1 1/2	38	NBR	Gunmetal	3827
NH	2 1/2" - 1 1/2"	1 1/2	38	NBR	Gunmetal	
NH	2 1/2" - 2 1/2"	2 1/2	65	NBR	Gunmetal	3698
NH	4" - 4"	4	102	NBR	Gunmetal	
NH	5" - 5"	5	125	NBR	Gunmetal	



RUSSIAN COUPLINGS system: GOST

Characteristics:

hose couplings for suction and delivery operations

Material:

Aluminium, Gunmetal etc.



type	size mm	hose inner diameter inch	hose inner diameter mm	material seal	material	article number
GOST	50/25	1	25	NBR	Aluminium	7130
GOST	50/38	1 1/2	38	NBR	Aluminium	3711
GOST	50/52	2	52	NBR	Aluminium	3712
GOST	70/38	1 1/2	38	NBR	Aluminium	5631
GOST	70/52	2	52	NBR	Aluminium	7443
GOST	70/64	2 1/2	65	NBR	Aluminium	3715
GOST	70/75	3	75	NBR	Aluminium	7017
GOST	80/75	3	75	NBR	Aluminium	3716
GOST	100/101	4	102	NBR	Aluminium	3718
GOST	125/125	5	125	NBR	Aluminium	7129
GOST	150/150	6	150	NBR	Aluminium	7128

type	size mm	hose inner diameter inch	hose inner diameter mm	material seal	material	article number
GOST	50/25	1	25	NBR	Gunmetal	
GOST	50/38	1 1/2	38	NBR	Gunmetal	
GOST	50/52	2	52	NBR	Gunmetal	3713
GOST	70/38	1 1/2	38	NBR	Gunmetal	
GOST	70/52	2	52	NBR	Gunmetal	
GOST	70/64	2 1/2	65	NBR	Gunmetal	3714
GOST	70/75	3	75	NBR	Gunmetal	
GOST	80/75	3	75	NBR	Gunmetal	3717
GOST	100/101	4	102	NBR	Gunmetal	3719
GOST	125/125	5	125	NBR	Gunmetal	
GOST	150/150	6	150	NBR	Gunmetal	



Characterisitcs:

hose couplings for suction operations

Material:

Gunmetal etc.

**JAPANESE COUPLINGS
system: Nakajima**



type	size mm	hose inner diameter inch	hose inner diameter mm	material seal	material	article number
Nakajima	40/38	1 1/2	38	NBR	Gunmetal	5632
Nakajima	50/52	2	52	NBR	Gunmetal	5633
Nakajima	65/38	1 1/2	38	NBR	Gunmetal	5634
Nakajima	65/52	2	52	NBR	Gunmetal	5635
Nakajima	65/65	2 1/2	65	NBR	Gunmetal	5636



Quality made in Germany ...
... Quality made by PARSCH



PARSCH Schläuche - Armaturen GmbH & Co. KG
Gildestraße 16, 49477 Ibbenbüren, Germany
www.parsch.de